

FOR CLARITY THIS PLAN CONTAINS FURTHER SURVEY INFORMATION THAT IS NOT SHOWN ON THE PRINTOUT BUT IS CONTAINED WITHIN THE AUTOCAD FILE

CLIENT

NORWEST CITY TRUST

PROJECT

**DETAIL SURVEY**  
OF  
**NORWEST MARKETOWN**  
**LOT 2 IN DP1213272 &**  
**LOT 5080 IN DP1008602**  
**(4 & 6 CENTURY CIRCUIT NORWEST)**

NOTES

- (i) This plan has been prepared for the exclusive use of NORWEST CITY TRUST and their consultants for design purposes and is not to be used for any other purpose or by any other entity without the express permission of LandPartners Pty Ltd.
- (ii) The title boundaries as shown hereon were not marked at the time of survey. Field survey was undertaken to confirm there are no significant differences to the title dimensions.
- (iii) Services shown hereon have been located where visible by field survey. If not able to be so located, services have been plotted from the records of relevant authorities where available and have been noted or symbolised accordingly. Where such records do not exist or are inadequate a notation has been made hereon.
- (iv) Underground connections where shown between services have been joined based on relevant authority records and have been symbolised accordingly.
- (v) Prior to any demolition, excavation or construction on the site, the relevant authority should be contacted for possible location of further underground services and detailed locations of all services.
- (vi) This data should not be reproduced in any way without the permission of LandPartners Pty Ltd.
- (vii) Any reproduction of this data must contain these notes

1	DRAWN	DATE	COMMENT

SYM	DESCRIPTION	SYM	DESCRIPTION
●	AUSPOST BOX	■	GAS MAIN
▲	BENCHMARK	■	GAS METER
⊙	BIN	■	GAS VALVE
●	BOLLARD	⊙	SEWER LAMPHOLE
⊕	BOREHOLE	⊙	SEWER MANHOLE
⊕	BUS STOP SIGN	⊕	SEWER VENT PIPE
⊕	FLAG POLE	⊕	OPTICAL FIBRE MARKER
⊕	GATE	⊕	OPTICAL FIBRE PIT
⊕	MAIL BOX	⊕	TELECOM DIST PILLAR
⊕	SEAT	⊕	TELECOM POLE
⊕	UNKNOWN SERVICE	⊕	TELECOM SINGLE PIT
⊕	DRAINAGE GULLY PIT	⊕	TELECOM TWIN PIT
⊕	DRAINAGE MANHOLE	⊕	TRAFFIC JUNCTION BOX
⊕	ELEC FUSE BOX	⊕	TRAFFIC LIGHT
⊕	ELEC GARDEN LIGHT	⊕	TRAFFIC SIGN
⊕	ELEC GREEN PILLAR	⊕	TRAF SIGNAL CONTROLLER
⊕	ELEC LIGHT POLE	⊕	SHRUB
⊕	ELEC POLE & LIGHT	⊕	TREE
⊕	ELEC POLE&TRANSFORMER	⊕	WATER AIR VALVE
⊕	ELEC POWER POLE	⊕	WATER HYDRANT
⊕	ELEC SINGLE PIT	⊕	WATER METER
⊕	ELEC STAY POLE	⊕	WATER PUMP
⊕	ELEC TWIN PIT	⊕	WATER STOP VALVE
⊕	FUEL DIP	⊕	WATER TAP

Symbols shown are indicative only. The symbol size and orientation does not necessarily represent the real size or orientation of the feature.

DRAINAGE PIPE U/G	— SW — SW — SW — SW —
DRAIN	— D — D — D — D —
ELECT. CABLE A/G	— W — W — W — W —
ELEC. CABLE U/G	— E — E — E — E —
GAS PIPE	— GAS — GAS — GAS — GAS —
FENCE LINE	— F — F — F — F —
SEWERAGE PIPE	— S — S — S — S —
TELSTRA CABLE	— T — T — T — T —
WATER PIPE	— W — W — W — W —



**Sydney Office**  
Level 2  
23-29 South Street  
Rydalmere NSW 2116  
PO Box 1144  
Dundas NSW 2117

p: (02) 9685 2000  
e: info@landpartners.com.au  
w: www.landpartners.com.au



LEVEL DATUM AHD (SCIMS)	LOCAL AUTHORITY THE HILLS SHIRE
LEVEL ORIGIN SSM64428	SCALE 1:750 (A1)
MERIDIAN 56	CONTOUR INTERVAL -
CO-ORD SYSTEM GDA2020	DRAWN JL
SURVEYOR DW	DATE 17/11/2022
FIELD FILE -	CHECKED RL
UDN	DATE 09/01/2023
	DATE 09/01/2023
	SHEET 1 OF 12

SY075692.000.9.2



A Before You Dig enquiry must be lodged at least two business days prior to starting any excavation or work site project.



FOR CLARITY THIS PLAN CONTAINS FURTHER SURVEY INFORMATION THAT IS NOT SHOWN ON THE PRINTOUT BUT IS CONTAINED WITHIN THE AUTOCAD FILE

- (A) EASEMENT FOR PUBLIC ACCESS (DP876998)
- (B) EASEMENT FOR RECREATIONAL FACILITIES & EASEMENT FOR JETTY STRUCTURES & PIERS (DP876998)
- (I) EASEMENT TO DRAIN WATER (DP1008602)
- (J) EASEMENT FOR SERVICES 12 & 1.5 WIDE (DP1008602)

102  
DP1065520

2  
DP1213272  
(4.273 Ha)

CONCRETE BUILDING  
"NORWEST MARKETOWN"  
SHOPPING COMPLEX

SHEET 4 ADJOINS

0m 1 2 4 6 8 10m  
SCALE 1:200 (A1)

CLIENT

NORWEST CITY TRUST

PROJECT

**DETAIL SURVEY**  
OF  
**NORWEST MARKETOWN**  
**LOT 2 IN DP1213272 &**  
**LOT 5080 IN DP1008602**  
**(4 & 6 CENTURY CIRCUIT NORWEST)**

NOTES

- (i) This plan has been prepared for the exclusive use of NORWEST CITY TRUST and their consultants for design purposes and is not to be used for any other purpose or by any other entity without the express permission of LandPartners Pty Ltd.
- (ii) The title boundaries as shown hereon were not marked at the time of survey. Field survey was undertaken to confirm there are no significant differences to the title dimensions.
- (iii) Services shown hereon have been located where visible by field survey. If not able to be so located, services have been plotted from the records of relevant authorities where available and have been noted or symbolised accordingly. Where such records do not exist or are inadequate a notation has been made hereon.
- (iv) Underground connections where shown between services have been joined based on relevant authority records and have been symbolised accordingly.
- (v) Prior to any demolition, excavation or construction on the site, the relevant authority should be contacted for possible location of further underground services and detailed locations of all services.
- (vi) This data should not be reproduced in any way without the permission of LandPartners Pty Ltd.
- (vii) Any reproduction of this data must contain these notes

1 DRAWN DATE COMMENT

SYM	DESCRIPTION	SYM	DESCRIPTION
▲	AUSPOST BOX	■	GAS MAIN
●	BENCHMARK	■	GAS METER
⊙	BIN	■	GAS VALVE
⊙	BOLLARD	⊙	SEWER LAMPHOLE
⊙	BOREHOLE	⊙	SEWER MANHOLE
⊙	BUS STOP SIGN	⊙	SEWER VENT PIPE
⊙	FLAG POLE	⊙	OPTICAL FIBRE MARKER
⊙	GATE	⊙	OPTICAL FIBRE PIT
⊙	MAIL BOX	⊙	TELECOM DIST PILLAR
⊙	SEAT	⊙	TELECOM POLE
⊙	UNKNOWN SERVICE	⊙	TELECOM SINGLE PIT
⊙	DRAINAGE GULLY PIT	⊙	TELECOM TWIN PIT
⊙	DRAINAGE MANHOLE	⊙	TRAFFIC JUNCTION BOX
⊙	ELEC FUSE BOX	⊙	TRAFFIC LIGHT
⊙	ELEC GARDEN LIGHT	⊙	TRAFFIC SIGN
⊙	ELEC GREEN PILLAR	⊙	TRAF SIGNAL CONTROLLER
⊙	ELEC LIGHT POLE	⊙	SHRUB
⊙	ELEC POLE & LIGHT	⊙	TREE
⊙	ELEC POLE & TRANSFORMER	⊙	WATER AIR VALVE
⊙	ELEC POWER POLE	⊙	WATER HYDRANT
⊙	ELEC SINGLE PIT	⊙	WATER METER
⊙	ELEC STAY POLE	⊙	WATER PUMP
⊙	ELEC TWIN PIT	⊙	WATER STOP VALVE
⊙	FUEL DIP	⊙	WATER TAP

Symbols shown are indicative only. The symbol size and orientation does not necessarily represent the real size or orientation of the feature.

DRAINAGE PIPE U/G	SW	SW	SW	SW
DRAIN	—	—	—	—
ELECT. CABLE A/G	—	—	—	—
ELEC. CABLE U/G	—	—	—	—
GAS PIPE	—	—	—	—
FENCE LINE	—	—	—	—
SEWERAGE PIPE	—	—	—	—
TELSTRA CABLE	—	—	—	—
WATER PIPE	—	—	—	—



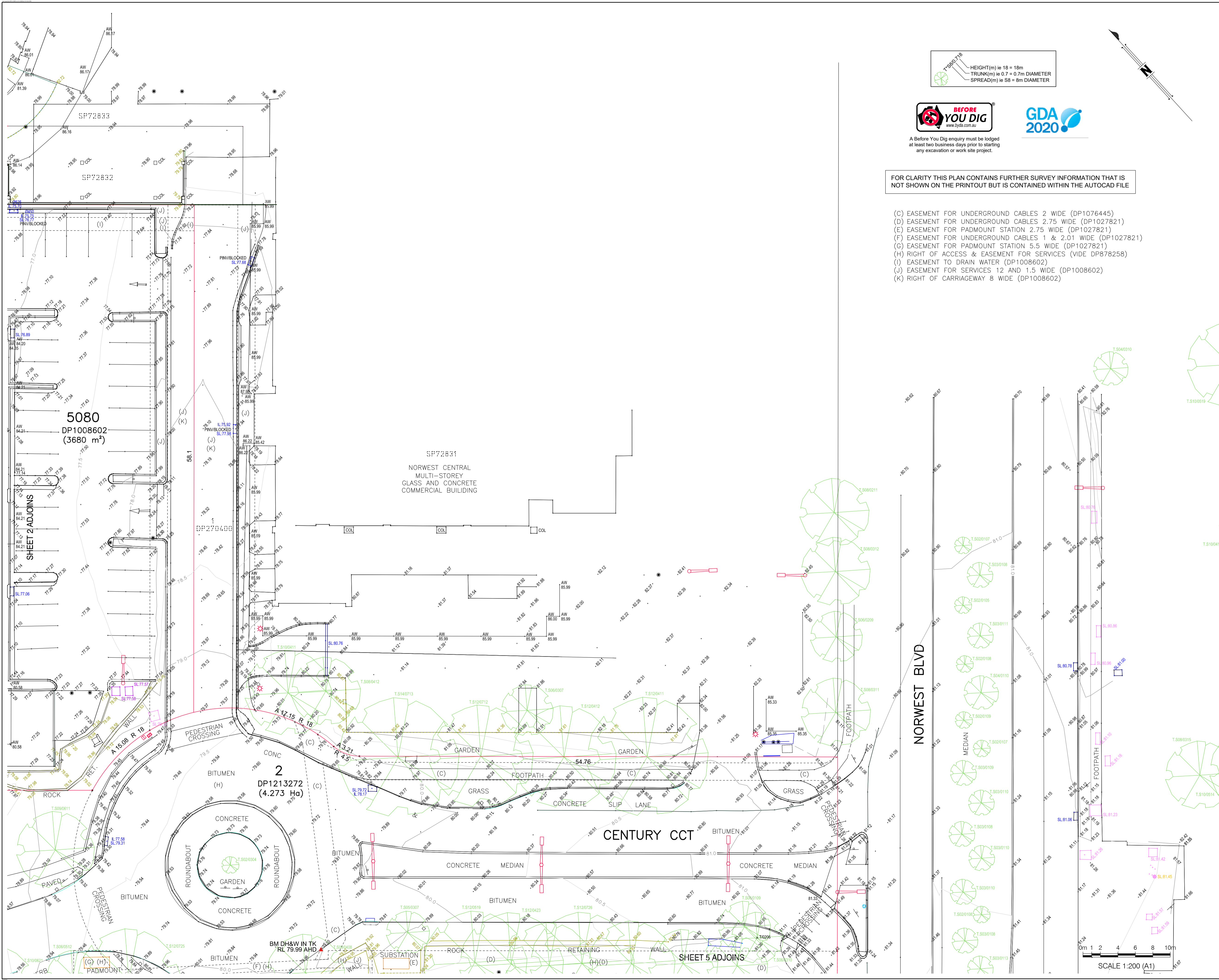
**Sydney Office**  
Level 2  
23-29 South Street  
Rydalmere NSW 2116  
PO Box 1144  
Dundas NSW 2117

p: (02) 9685 2000  
e: info@landpartners.com.au  
w: www.landpartners.com.au



LEVEL DATUM AHD (SCIMS)	LOCAL AUTHORITY THE HILLS SHIRE
LEVEL ORIGIN SSM64428	SCALE 1:200 (A1)
MERIDIAN 56	CONTOUR INTERVAL
CO-ORD SYSTEM GDA2020	DRAWN JL
SURVEYOR DW	DATE 17/11/2022
FIELD FILE UDN	CHECKED RL
	DATE 09/01/2023
	APPROVED RL
	DATE 09/01/2023

SY075692.000.9.2



FOR CLARITY THIS PLAN CONTAINS FURTHER SURVEY INFORMATION THAT IS NOT SHOWN ON THE PRINTOUT BUT IS CONTAINED WITHIN THE AUTOCAD FILE

- (C) EASEMENT FOR UNDERGROUND CABLES 2 WIDE (DP1076445)  
(D) EASEMENT FOR UNDERGROUND CABLES 2.75 WIDE (DP1027821)  
(E) EASEMENT FOR PADMOUNT STATION 2.75 WIDE (DP1027821)  
(F) EASEMENT FOR UNDERGROUND CABLES 1 & 2.01 WIDE (DP1027821)  
(G) EASEMENT FOR PADMOUNT STATION 5.5 WIDE (DP1027821)  
(H) RIGHT OF ACCESS & EASEMENT FOR SERVICES (VIDE DP878258)  
(I) EASEMENT TO DRAIN WATER (DP1008602)  
(J) EASEMENT FOR SERVICES 12 AND 1.5 WIDE (DP1008602)  
(K) RIGHT OF CARRIAGEWAY 8 WIDE (DP1008602)

CLIENT  
**NORWEST CITY TRUST**

PROJECT  
**DETAIL SURVEY  
OF  
NORWEST MARKETOWN  
LOT 2 IN DP1213272 &  
LOT 5080 IN DP1008602  
(4 & 6 CENTURY CIRCUIT NORWEST)**

- NOTES
- (i) This plan has been prepared for the exclusive use of NORWEST CITY TRUST and their consultants for design purposes and is not to be used for any other purpose or by any other entity without the express permission of LandPartners Pty Ltd.
- (ii) The title boundaries as shown hereon were not marked at the time of survey. Field survey was undertaken to confirm there are no significant differences to the title dimensions.
- (iii) Services shown hereon have been located where visible by field survey. If not able to be so located, services have been plotted from the records of relevant authorities where available and have been noted or symbolised accordingly. Where such records do not exist or are inadequate a notation has been made hereon.
- (iv) Underground connections where shown between services have been joined based on relevant authority records and have been symbolised accordingly.
- (v) Prior to any demolition, excavation or construction on the site, the relevant authority should be contacted for possible location of further underground services and detailed locations of all services.
- (vi) This data should not be reproduced in any way without the permission of LandPartners Pty Ltd.
- (vii) Any reproduction of this data must contain these notes

1	DRAWN	DATE	COMMENT

SYM	DESCRIPTION	SYM	DESCRIPTION
●	AUSPOST BOX	■	GAS MAIN
▲	BENCHMARK	■	GAS METER
○	BIN	■	GAS VALVE
●	BOLLARD	○	SEWER LAMP/HOLE
○	BOREHOLE	○	SEWER MAN/HOLE
■	BUS STOP SIGN	○	SEWER WENT PIPE
■	FLAG POLE	○	OPTICAL FIBRE MARKER
■	GATE	■	OPTICAL FIBRE PIT
■	MAIL BOX	■	TELECOM DIST PILLAR
■	SEAT	■	TELECOM POLE
■	UNKNOWN SERVICE	■	TELECOM SINGLE PIT
■	DRAINAGE GULLY PIT	■	TELECOM TWIN PIT
■	DRAINAGE MAN/HOLE	■	TRAFFIC JUNCTION BOX
■	ELEC FUSE BOX	■	TRAFFIC LIGHT
■	ELEC GARDEN LIGHT	■	TRAFFIC SIGN
■	ELEC GREEN PILLAR	■	TRAF SIGNAL CONTROLLER
■	ELEC LIGHT POLE	■	SHRUB
■	ELEC POLE & LIGHT	■	TREE
■	ELEC PILE/TRANSFORMER	■	WATER AIR VALVE
■	ELEC POWER POLE	■	WATER HYDRANT
■	ELEC SINGLE PIT	■	WATER METER
■	ELEC STAY POLE	■	WATER PUMP
■	ELEC TWIN PIT	■	WATER STOP VALVE
■	FUEL DIP	■	WATER TAP

Symbols shown are indicative only. The symbol size and orientation does not necessarily represent the real size or orientation of the feature.

DRAINAGE PIPE U/G	SW	SW	SW	SW
DRAIN	—	—	—	—
ELEC. CABLE A/G	—	—	—	—
ELEC. CABLE U/G	—	—	—	—
GAS PIPE	—	—	—	—
SEWERAGE PIPE	—	—	—	—
TELSTRA CABLE	—	—	—	—
WATER PIPE	—	—	—	—

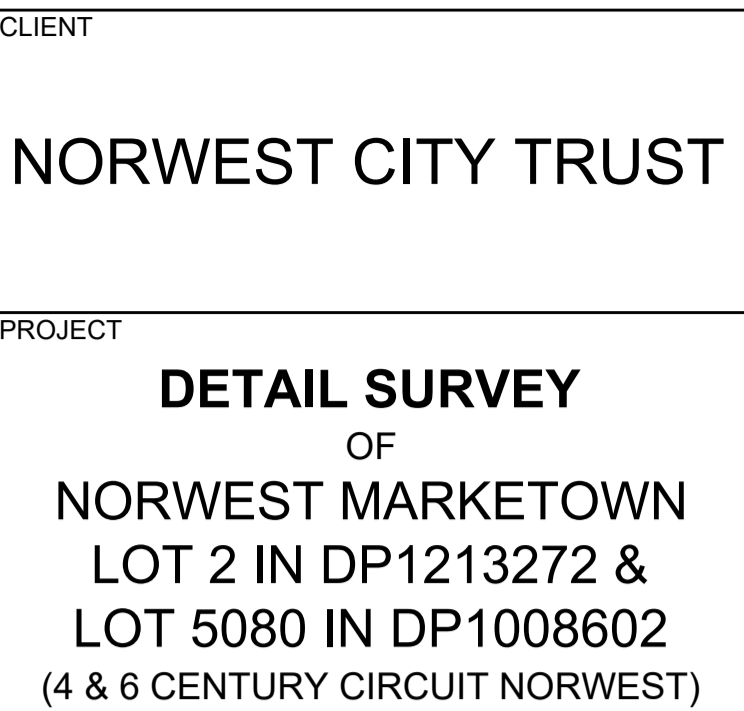
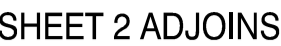
**LANDPARTNERS**  
surveyors and planners

**Sydney Office**  
Level 2  
23-29 South Street  
Rydalmere NSW 2116  
PO Box 1144  
Dundas NSW 2117

p: (02) 9685 2000  
e: info@landpartners.com.au  
w: www.landpartners.com.au

LEVEL DATUM AHD (SCIMS)		LOCAL AUTHORITY THE HILLS SHIRE	
LEVEL ORIGIN SSM64428		SCALE 1:200 (A1)	
MERIDIAN 56		CONTOUR INTERVAL -	
CO-ORD SYSTEM GDA2020	DRAWN JL	DATE 09/01/2023	
SURVEYOR DW	DATE OF SURVEY 17/11/2022	CHECKED RL	DATE 09/01/2023
FIELD FILE	APPROVED RL	DATE 09/01/2023	
UDN	SHEET 3 OF 12		

SY075692.000.9.2



**NOTES**

- (1) This plan has been prepared for the exclusive use of NORWEST CITY TRUST and their consultants for specific purposes and is not to be used for any other purpose or by any other entity without the express written permission of LandPartners Pty Ltd.
- (2) The title boundaries as shown to be recorded were not marked at the time of survey. Field survey was undertaken to confirm there are no significant differences to the title dimensions.
- (3) Services shown here have been located where visible by field survey. If not able to be so located, services have been plotted from the records of relevant authorities where available and have been marked as symbolised accordingly. Where such records do not exist or are inadequate a notation has been made herein.
- (4) Underground connections where shown between services have been joined based on relevant authority records and have been symbolised accordingly.
- (5) Prior to any demolition, excavation or construction on the site, the relevant authority should be contacted for possible location of further underground services and detailed locations of all services.
- (6) This data should not be reproduced in any way without the permission of LandPartners Pty Ltd.
- (7) Any reproduction of this document must contain these notes

1	DRAWN	DATE	COMMENT

SYM	DESCRIPTION	SYM	DESCRIPTION
	AUSPOST BOX		GAS MAIN
	BENCHMARK		GAS METER
	BIN		GAS VALVE
	BOLLARD		SEWER LAMP/HOLE
	BOREHOLE		SEWER MANHOLE
	BUS STOP SIGN		SEWER WENT PIPE
	FLAG POLE		OPTICAL FIBRE MARKER
	GATE		OPTICAL FIBRE PIT
	MAIL BOX		TELECOM DIST. PILLAR
	SEAT		TELECOM POLE
	UNKNOWN SERVICE		TELECOM SINGLE PIT
	DRAINAGE GULLY PIT		TELECOM TWIN PIT
	DRAINAGE MANHOLE		TRAFFIC JUNCTION BOX
	ELEC FUSE BOX		TRAFFIC LIGHT
	ELEC GARDEN LIGHT		TRAFFIC SIGN
	ELEC GREEN PILLAR		TRAF SIGNAL CONTROLLER
	ELEC LIGHT POLE		SHRUB
	ELEC POLE & LIGHT		TREE
	ELEC POLES & TRANSFORMER		WATER AIR VALVE
	ELEC POWER POLE		WATER HYDRANT
	ELEC SINGLE PIT		WATER METER
	ELEC STAY POLE		WATER PUMP
	ELEC TWIN PIT		WATER STOP VALVE
	FUEL DIT		WATER TAP

Symbols shown are indicative only. The symbol size and orientation does not necessarily represent the real size or orientation of the feature.

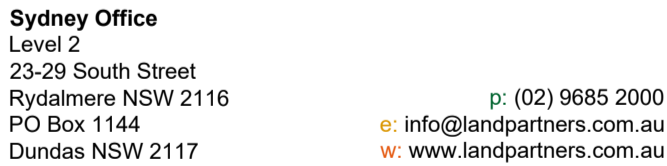
Diagram illustrating the color coding for various utility lines:

- Drainage Pipe U/G: Blue line with 'SW' labels.
- Drain: Blue line with 'D' labels.
- Elect. Cable A/G: Red line with 'W' labels.
- Elect. Cable U/G: Red line with 'E' labels.
- Gas Pipe: Orange line with 'GAS' labels.
- Fence Line: Brown line with '/' labels.
- Sewerage Pipe: Yellow line with 'S' labels.
- Telstra Cable: Purple line with 'T' labels.
- Water Pipe: Green line with 'W' labels.



A Before You Dig enquiry must be lodged at least two business days prior to starting any excavation or work site project.

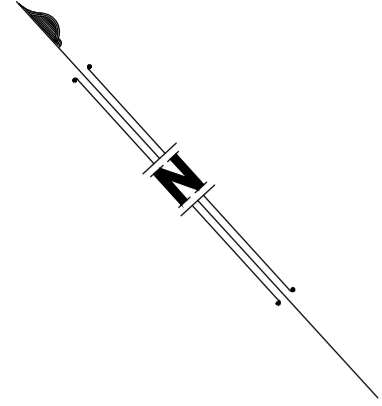
FOR CLARITY THIS PLAN CONTAINS FURTHER SURVEY INFORMATION THAT IS NOT SHOWN ON THE PRINTOUT BUT IS CONTAINED WITHIN THE AUTOCAD FILE



LEVEL DATUM AHD (SCIMS)	LOCAL AUTHORITY THE HILLS SHIRE		
LEVEL ORIGIN SSM64428	SCALE 1:200 (A1)		
MERIDIAN 56	CONTOUR INTERVAL -		
CO-ORD SYSTEM GDA2020	DRAWN JL	DATE 09/01/2023	
SURVEYOR LDW	CHECKED RL	DATE 09/01/2023	
FIELD FILE -	APPROVED RL	DATE 09/01/2023	

SY075692.000.9.2





FAIRVIEW DR

SOLENT CCT

SOLENT CCT

HILLSONG CHURCH  
(METAL AND GLASS BUILDING)

SHEET 7 ADJOINS

CLIENT  
**NORWEST CITY TRUST**

PROJECT  
**DETAIL SURVEY  
OF  
NORWEST MARKETOWN  
LOT 2 IN DP1213272 &  
LOT 5080 IN DP1008602  
(4 & 6 CENTURY CIRCUIT NORWEST)**

- NOTES
- This plan has been prepared for the exclusive use of NORWEST CITY TRUST and their consultants for design purposes and is not to be used for any other purpose or by any other entity without the express permission of LandPartners Pty Ltd.
  - The title boundaries as shown hereon were not marked at the time of survey. Field survey was undertaken to confirm there are no significant differences to the title dimensions.
  - Services shown hereon have been located where visible by field survey. If not able to be so located, services have been plotted from the records of relevant authorities where available and have been noted or symbolised accordingly. Where such records do not exist or are inadequate a notation has been made hereon.
  - Underground connections where shown between services have been joined based on relevant authority records and have been symbolised accordingly.
  - Prior to any demolition, excavation or construction on the site, the relevant authority should be contacted for possible location of further underground services and detailed locations of all services.
  - This data should not be reproduced in any way without the permission of LandPartners Pty Ltd.
  - Any reproduction of this data must contain these notes

1	DRAWN	DATE	COMMENT

SYM	DESCRIPTION	SYM	DESCRIPTION
	AUSPOST BOX		GAS MAIN
	BENCHMARK		GAS METER
	BIN		GAS VALVE
	BOLLARD		SEWER LAMP/HOLE
	BOREHOLE		SEWER MANHOLE
	BUS STOP SIGN		SEWER VENT PIPE
	FLAG POLE		OPTICAL FIBRE MARKER
	GATE		OPTICAL FIBRE PIT
	MAIL BOX		TELECOM DIST PILLAR
	SEAT		TELECOM POLE
	UNKNOWN SERVICE		TELECOM SINGLE PIT
	DRAINAGE GULLY PIT		TELECOM TWIN PIT
	DRAINAGE MANHOLE		TRAFFIC JUNCTION BOX
	ELEC FUSE BOX		TRAFFIC LIGHT
	ELEC GARDEN LIGHT		TRAFFIC SIGN
	ELEC GREEN PILLAR		TRAF SIGNAL CONTROLLER
	ELEC LIGHT POLE		SHRUB
	ELEC POLE & LIGHT		TREE
	ELEC POLE & TRANSFORMER		WATER AIR VALVE
	ELEC POWER POLE		WATER HYDRANT
	ELEC SINGLE PIT		WATER METER
	ELEC STAY POLE		WATER PUMP
	ELEC TWIN PIT		WATER STOP VALVE
	FUEL DIP		WATER TAP

Symbols shown are indicative only. The symbol size and orientation does not necessarily represent the real size or orientation of the feature.

DRAINAGE PIPE U/G	
DRAIN	
ELECT. CABLE A/G	
ELEC. CABLE U/G	
GAS PIPE	
FENCE LINE	
SEWERAGE PIPE	
TELSTRA CABLE	
WATER PIPE	

**LANDPARTNERS**  
surveyors and planners

**Sydney Office**  
Level 2  
23-29 South Street  
Rydalmere NSW 2116  
PO Box 1144  
Dundas NSW 2117

p: (02) 9685 2000  
e: info@landpartners.com.au  
w: www.landpartners.com.au

LEVEL DATUM AHD (SCMS)	LOCAL AUTHORITY THE HILLS SHIRE	
LEVEL ORIGIN SSM64428	SCALE 1:200 (A1)	
MERIDIAN 56	CONTOUR INTERVAL -	
CO-ORD SYSTEM GDA2020	DRAWN JL	DATE 09/01/2023
SURVEYOR DW	DATE OF SURVEY 17/11/2022	CHECKED RL
FIELD FILE -	APPROVED RL	DATE 09/01/2023
UDN		SHEET 6 OF 12

SY075692.000.9.2

T.S070716  
HEIGHT(m) ie 18 = 18m  
TRUNK(m) ie 0.7 = 0.7m DIAMETER  
SPREAD(m) ie 8m = 8m DIAMETER

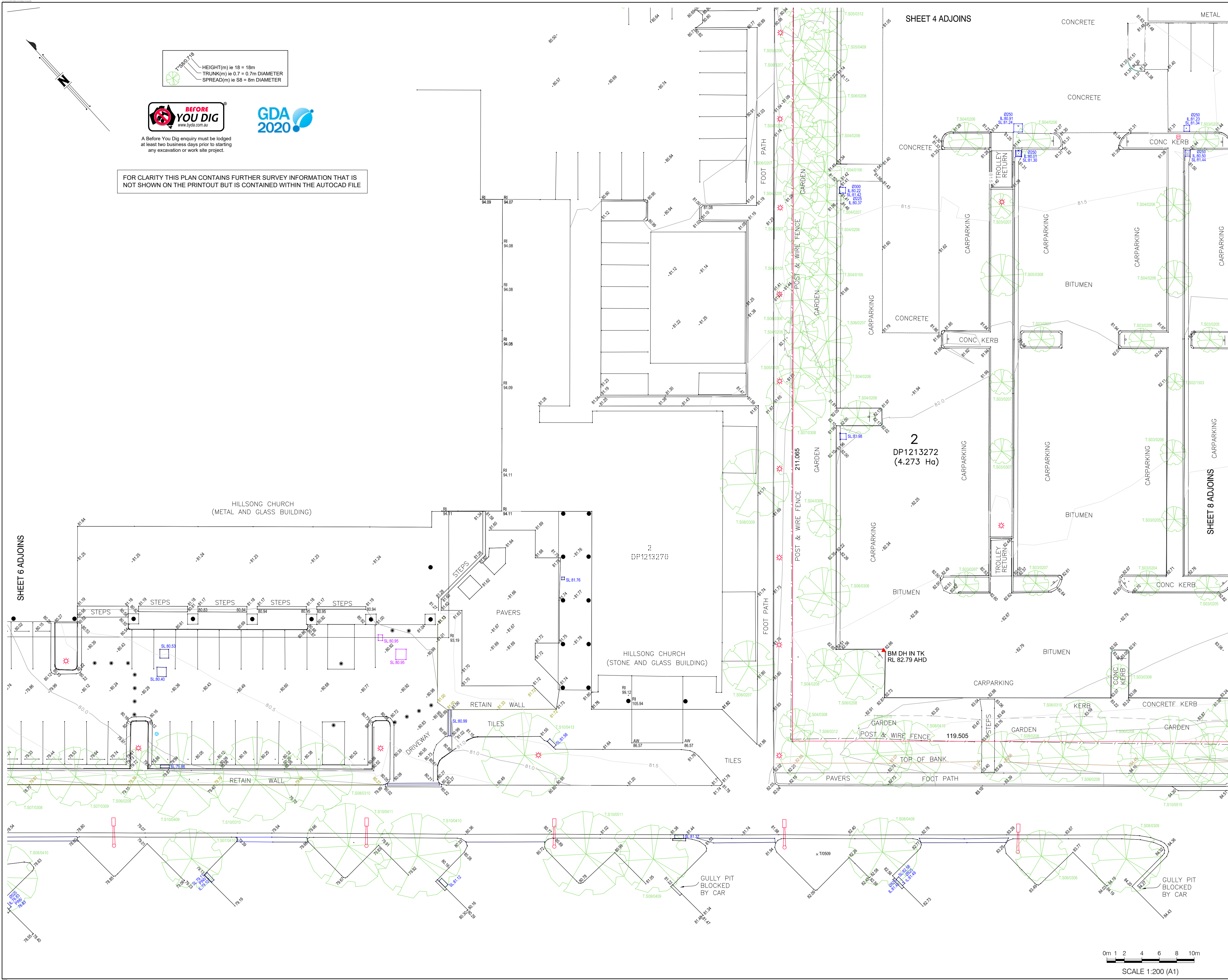


A Before You Dig enquiry must be lodged at least two business days prior to starting any excavation or work site project.



FOR CLARITY THIS PLAN CONTAINS FURTHER SURVEY INFORMATION THAT IS NOT SHOWN ON THE PRINTOUT BUT IS CONTAINED WITHIN THE AUTOCAD FILE

0m 1 2 4 6 8 10m  
SCALE 1:200 (A1)



T 500 710  
HEIGHT(m) ie 18 = 18m  
TRUNK(m) ie 0.7 = 0.7m DIAMETER  
SPREAD(m) ie S8 = 8m DIAMETER



A Before You Dig enquiry must be lodged at least two business days prior to starting any excavation or work site project.



FOR CLARITY THIS PLAN CONTAINS FURTHER SURVEY INFORMATION THAT IS NOT SHOWN ON THE PRINTOUT BUT IS CONTAINED WITHIN THE AUTOCAD FILE

CLIENT  
**NORWEST CITY TRUST**

PROJECT  
**DETAIL SURVEY  
OF  
NORWEST MARKETOWN  
LOT 2 IN DP1213272 &  
LOT 5080 IN DP1008602  
(4 & 6 CENTURY CIRCUIT NORWEST)**

NOTES  
(i) This plan has been prepared for the exclusive use of NORWEST CITY TRUST and their consultants for design purposes and is not to be used for any other purpose or by any other entity without the express permission of LandPartners Pty Ltd.  
(ii) The title boundaries as shown hereon were not marked at the time of survey. Field survey was undertaken to confirm there are no significant differences to the title dimensions.  
(iii) Services shown hereon have been located where visible by field survey. If not able to be so located, services have been plotted from the records of relevant authorities where available and have been noted or symbolised accordingly. Where such records do not exist or are inadequate a notation has been made hereon.  
(iv) Underground connections where shown between services have been joined based on relevant authority records and have been symbolised accordingly.  
(v) Prior to any demolition, excavation or construction on the site, the relevant authority should be contacted for possible location of further underground services and detailed locations of all services.  
(vi) This data should not be reproduced in any way without the permission of LandPartners Pty Ltd.  
(vii) Any reproduction of this data must contain these notes

1	DRAWN	DATE	COMMENT

SYM	DESCRIPTION	SYM	DESCRIPTION
▲	AUSPOST BOX	■	GAS MAIN
●	BENCHMARK	■	GAS METER
○	BIN	■	GAS VALVE
●	BOLLARD	○	SEWER LAMP/HOLE
○	BOREHOLE	○	SEWER MANHOLE
■	BUS STOP SIGN	○	SEWER VENT PIPE
■	FLAG POLE	○	OPTICAL FIBRE MARKER
■	GATE	■	OPTICAL FIBRE PIT
■	MAIL BOX	■	TELECOM DIST PILLAR
■	SEAT	■	TELECOM POLE
■	UNKNOWN SERVICE	■	TELECOM SINGLE PIT
■	DRAINAGE GULLY PIT	■	TELECOM TWIN PIT
■	DRAINAGE MANHOLE	■	TRAFFIC JUNCTION BOX
■	ELEC FUSE BOX	■	TRAFFIC LIGHT
■	ELEC GARDEN LIGHT	■	TRAFFIC SIGN
■	ELEC GREEN PILLAR	■	TRAF SIGNAL CONTROLLER
■	ELEC LIGHT POLE	■	SHRUB
■	ELEC POLE & LIGHT	■	TREE
■	ELEC POLE & TRANSFORMER	■	WATER AIR VALVE
■	ELEC POWER POLE	■	WATER HYDRANT
■	ELEC SINGLE PIT	■	WATER METER
■	ELEC STAY POLE	■	WATER PUMP
■	ELEC TWIN PIT	■	WATER STOP VALVE
■	FUEL DIP	■	WATER TAP

Symbols shown are indicative only. The symbol size and orientation does not necessarily represent the real size or orientation of the feature.

DRAINAGE PIPE U/G	— SW — SW — SW — SW —
DRAIN	— D — D — D — D —
ELECT. CABLE A/G	— W — W — W — W —
ELEC. CABLE U/G	— E — E — E — E —
GAS PIPE	— GAS — GAS — GAS — GAS —
FENCE LINE	— F — F — F — F —
SEWERAGE PIPE	— S — S — S — S —
TELSTRA CABLE	— T — T — T — T —
WATER PIPE	— W — W — W — W —



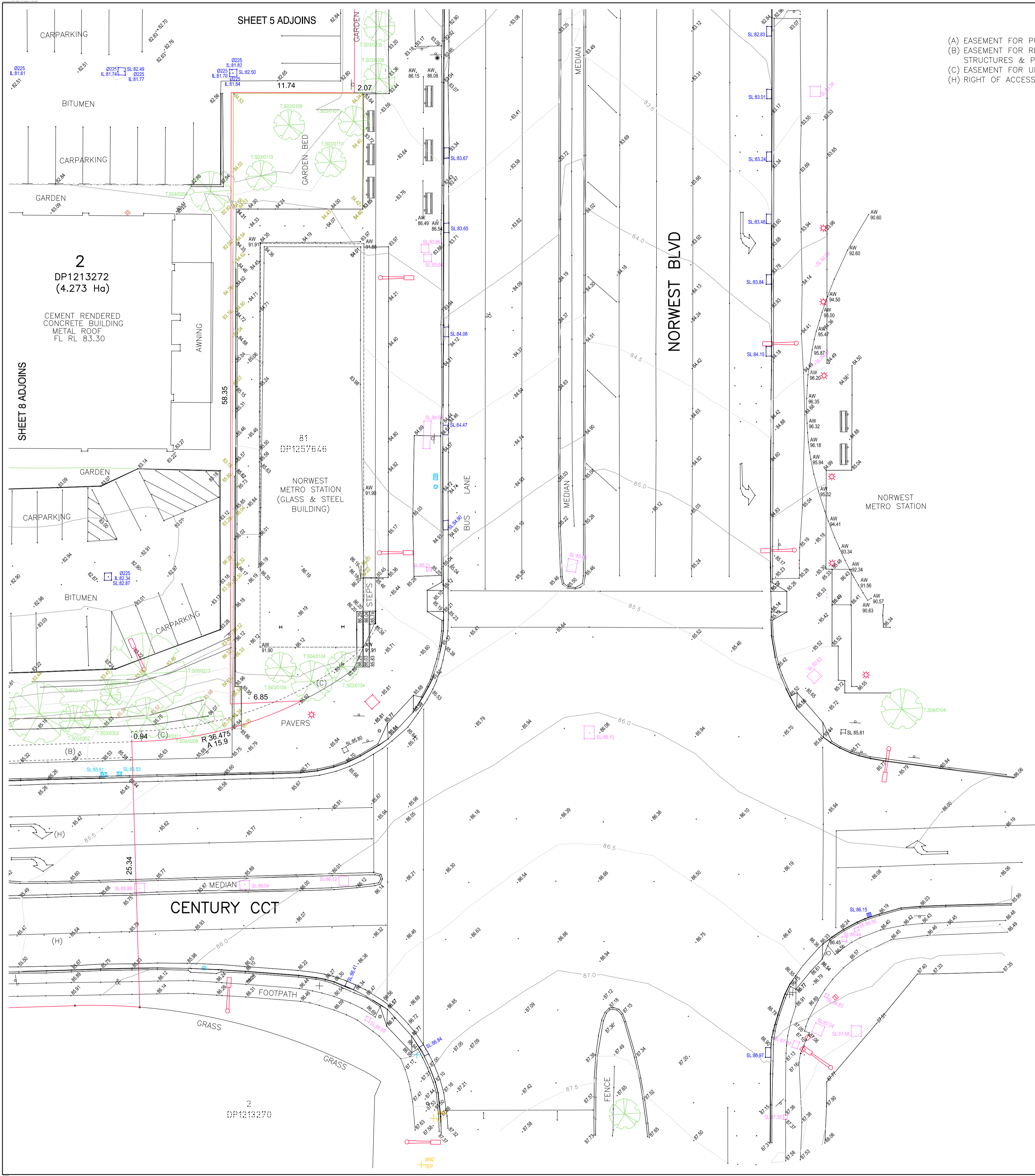
Sydney Office  
Level 1  
23-29 South Street  
Rydalmere NSW 2116  
PO Box 1144  
Dundas NSW 2117  
p: (02) 9685 2000  
e: info@landpartners.com.au  
w: www.landpartners.com.au



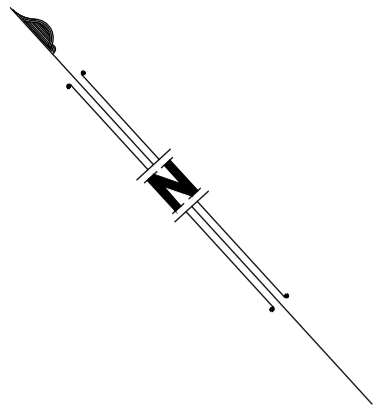
LEVEL DATUM AHD (SCIMS)	LOCAL AUTHORITY THE HILLS SHIRE
LEVEL ORIGIN SSM64428	SCALE 1:200 (A1)
MERIDIAN 56	CONTOUR INTERVAL -
CO-ORD SYSTEM GDA2020	DRAWN JL
SURVEYOR DW	DATE 09/01/2023
FIELD FILE	CHECKED RL
UDN	DATE 09/01/2023

SY075692.000.9.2  
SHEET 7 OF 12





- (A) EASEMENT FOR PUBLIC ACCESS (DP876998)  
(B) EASEMENT FOR RECREATIONAL FACILITIES & EASEMENT FOR JETTY STRUCTURES & PIERS (DP876998)  
(C) EASEMENT FOR UNDERGROUND CABLES 2 WIDE (DP1076445)  
(H) RIGHT OF ACCESS & EASEMENT FOR SERVICES (VIDE DP878258)



HEIGHT(m) ie 18 = 18m  
TRUNK(m) ie 0.7 = 0.7m DIAMETER  
SPREAD(m) ie S8 = 8m DIAMETER



A Before You Dig enquiry must be lodged at least two business days prior to starting any excavation or work site project.



FOR CLARITY THIS PLAN CONTAINS FURTHER SURVEY INFORMATION THAT IS NOT SHOWN ON THE PRINTOUT BUT IS CONTAINED WITHIN THE AUTOCAD FILE

0m 1 2 4 6 8 10m  
SCALE 1:200 (A1)

CLIENT

NORWEST CITY TRUST

PROJECT

**DETAIL SURVEY**  
OF  
**NORWEST MARKETOWN**  
**LOT 2 IN DP1213272 &**  
**LOT 5080 IN DP1008602**  
**(4 & 6 CENTURY CIRCUIT NORWEST)**

- NOTES**
- (i) This plan has been prepared for the exclusive use of NORWEST CITY TRUST and their consultants for design purposes and is not to be used for any other purpose or by any other entity without the express permission of LandPartners Pty Ltd.
  - (ii) The title boundaries as shown hereon were not marked at the time of survey. Field survey was undertaken to confirm there are no significant differences to the title dimensions.
  - (iii) Services shown hereon have been located where visible by field survey. If not able to be so located, services have been plotted from the records of relevant authorities where available and have been noted or symbolised accordingly. Where such records do not exist or are inadequate a notation has been made hereon.
  - (iv) Underground connections where shown between services have been joined based on relevant authority records and have been symbolised accordingly.
  - (v) Prior to any demolition, excavation or construction on the site, the relevant authority should be contacted for possible location of further underground services and detailed locations of all services.
  - (vi) This data should not be reproduced in any way without the permission of LandPartners Pty Ltd.
  - (vii) Any reproduction of this data must contain these notes

1	DRAWN	DATE	COMMENT
---	-------	------	---------

SYM	DESCRIPTION	SYM	DESCRIPTION
●	AUSPOST BOX	■	GAS MAIN
▲	BENCHMARK	■	GAS METER
○	BIN	■	GAS VALVE
●	BOLLARD	○	SEWER LAMPHOLE
⊕	BOREHOLE	○	SEWER MANHOLE
⊕	BUS STOP SIGN	○	SEWER VENT PIPE
⊕	FLAG POLE	○	OPTICAL FIBRE MARKER
⊕	GATE	○	OPTICAL FIBRE PIT
⊕	MAIL BOX	○	TELECOM DIST PILLAR
⊕	SEAT	○	TELECOM POLE
⊕	UNKNOWN SERVICE	○	TELECOM SINGLE PIT
⊕	DRAINAGE GULLY PIT	○	TELECOM TWIN PIT
⊕	DRAINAGE MANHOLE	⊕	TRAFFIC JUNCTION BOX
⊕	ELEC FUSE BOX	⊕	TRAFFIC LIGHT
⊕	ELEC GARDEN LIGHT	⊕	TRAFFIC SIGN
⊕	ELEC GREEN PILLAR	⊕	TRAF SIGNAL CONTROLLER
⊕	ELEC LIGHT POLE	⊕	SHRUB
⊕	ELEC POLE & LIGHT	⊕	TREE
⊕	ELEC POLE&TRANSFORMER	⊕	WATER AIR VALVE
⊕	ELEC POWER POLE	⊕	WATER HYDRANT
⊕	ELEC SINGLE PIT	⊕	WATER METER
⊕	ELEC STAY POLE	⊕	WATER PUMP
⊕	ELEC TWIN PIT	⊕	WATER STOP VALVE
⊕	FUEL DIP	⊕	WATER TAP

Symbols shown are indicative only. The symbol size and orientation does not necessarily represent the real size or orientation of the feature.

DRAINAGE PIPE U/G	— SW — SW — SW — SW —
DRAIN	— D — D — D — D —
ELECT. CABLE A/G	— W — W — W — W —
ELEC. CABLE U/G	— E — E — E — E —
GAS PIPE	— G — G — G — G —
FENCE LINE	— F — F — F — F —
SEWERAGE PIPE	— S — S — S — S —
TELSTRA CABLE	— T — T — T — T —
WATER PIPE	— W — W — W — W —



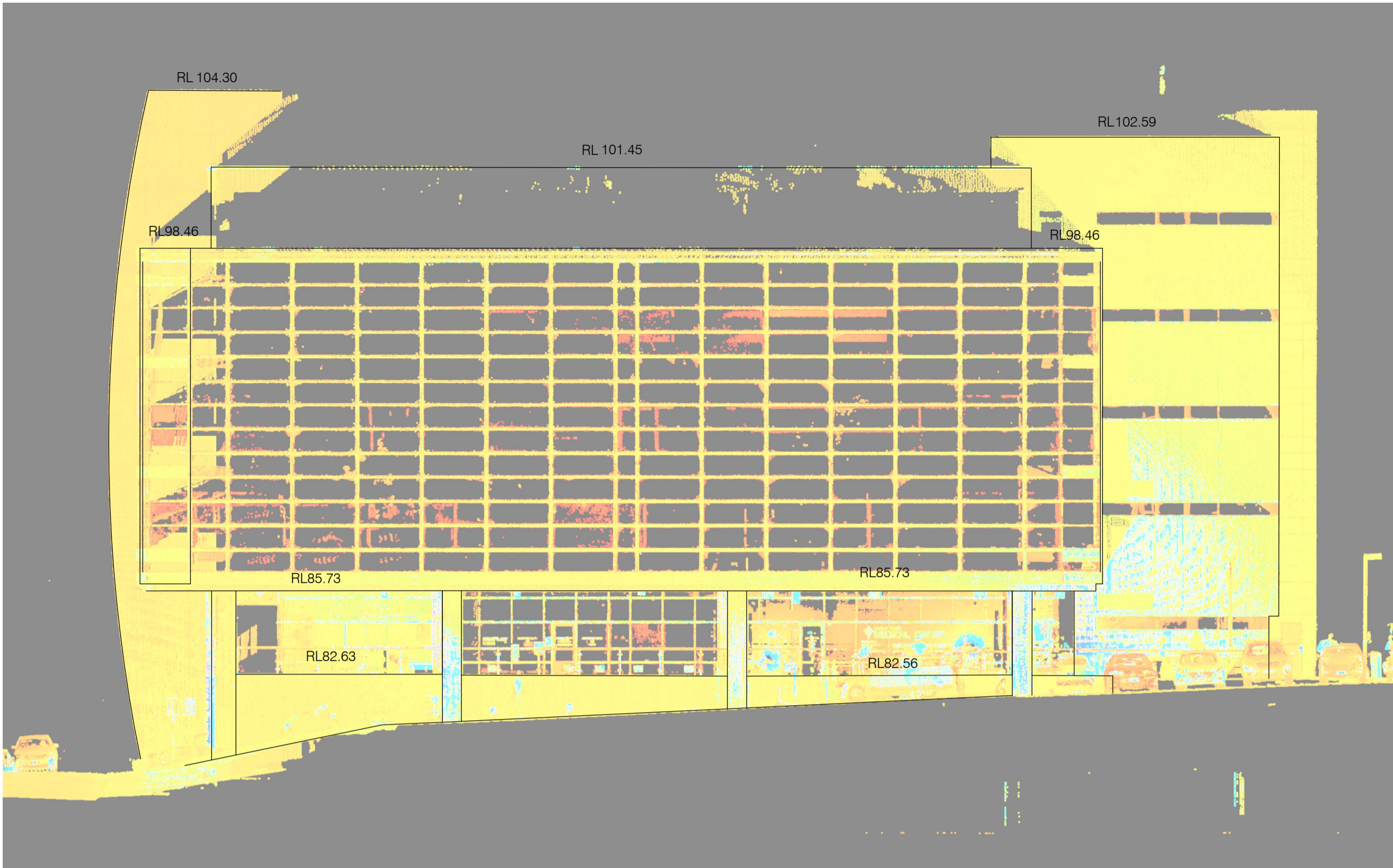
**Sydney Office**  
Level 2  
23-29 South Street  
Rydalmere NSW 2116  
PO Box 1144  
Dundas NSW 2117

p: (02) 9685 2000  
e: info@landpartners.com.au  
w: www.landpartners.com.au

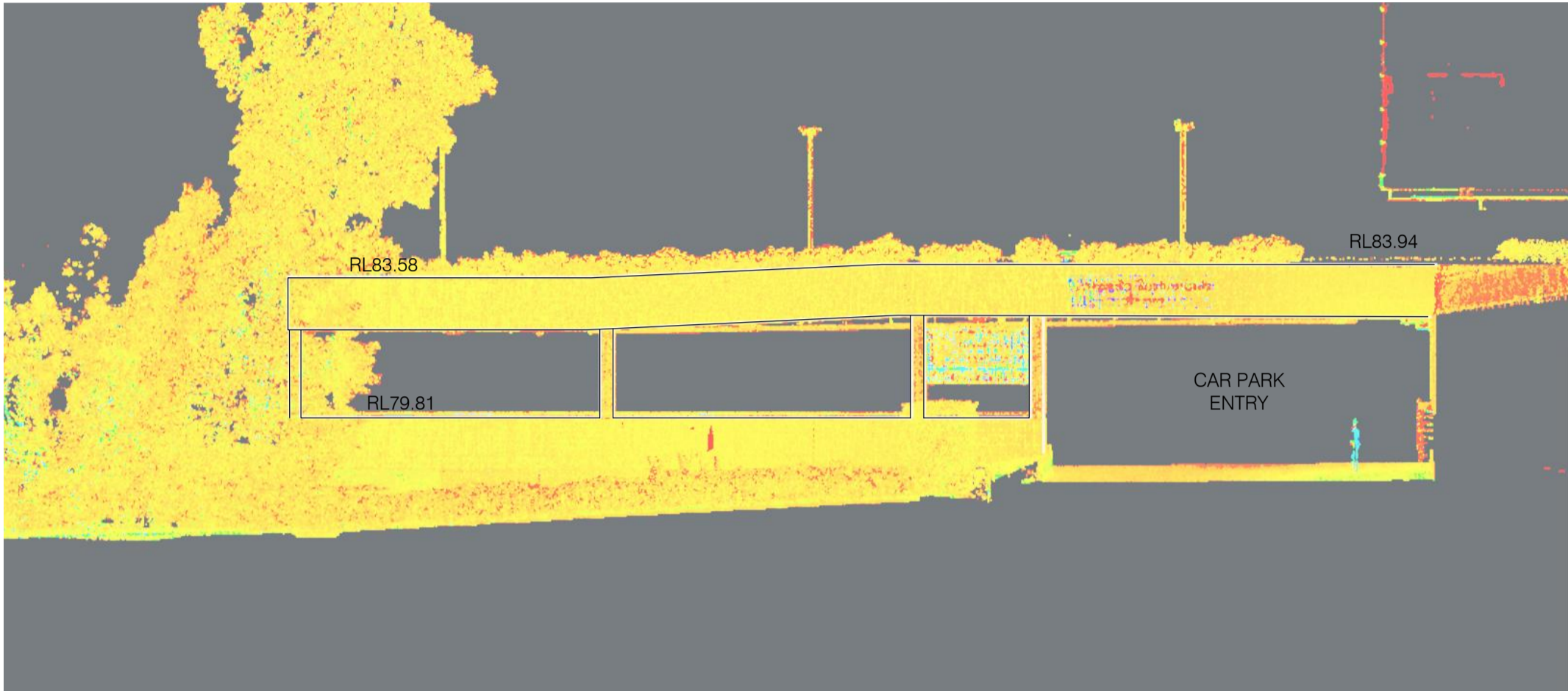


LEVEL DATUM AHD (SCIMS)		LOCAL AUTHORITY THE HILLS SHIRE	
LEVEL ORIGIN SSM64428		SCALE 1:200 (A1)	
MERIDIAN 56		CONTOUR INTERVAL -	
CO-ORD SYSTEM GDA2020		DRAWN JL	DATE 09/01/2023
SURVEYOR DW	DATE OF SURVEY 17/11/2022	CHECKED RL	DATE 09/01/2023
FIELD FILE		APPROVED RL	DATE 09/01/2023
UDN		SHEET 9 OF 12	

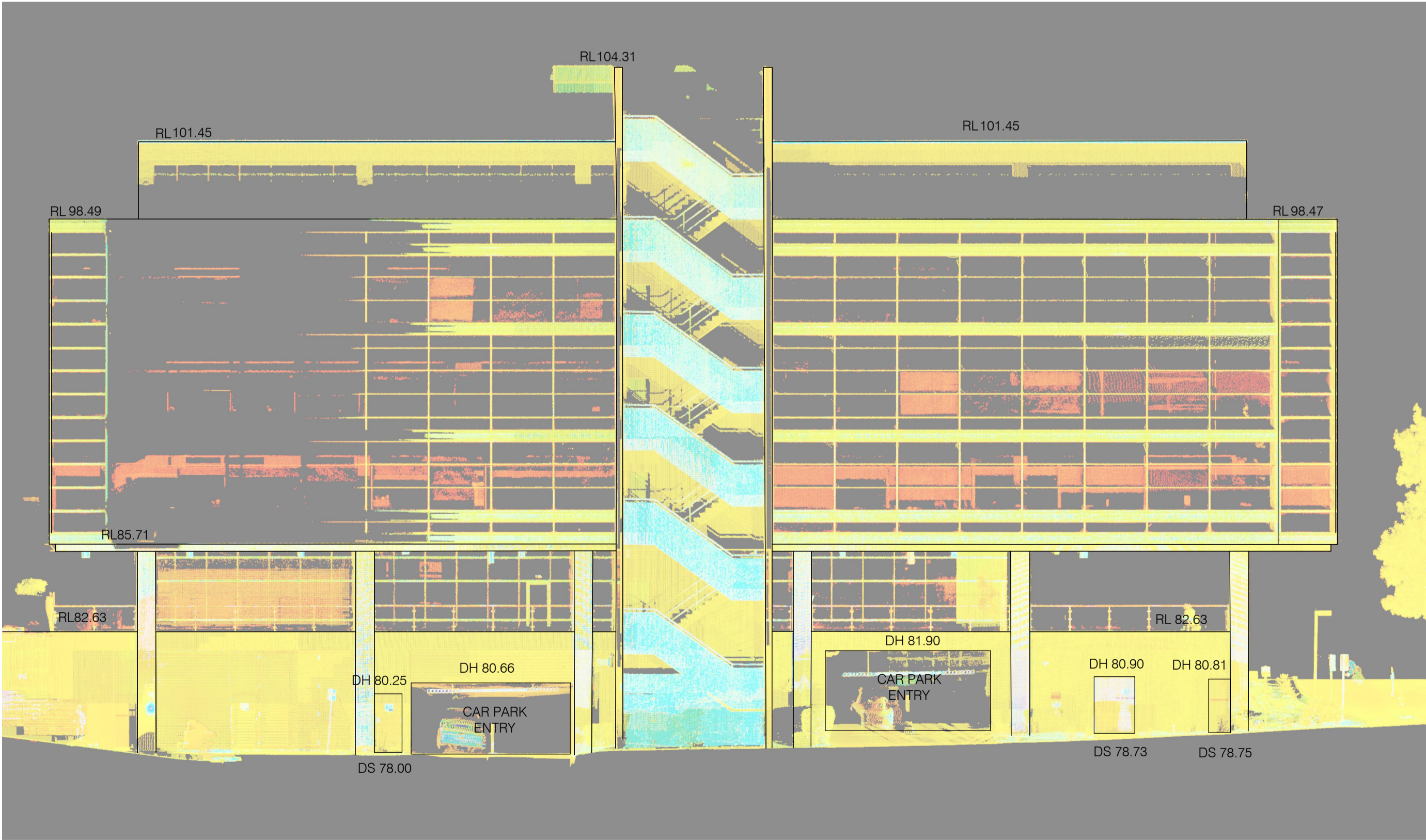
SY075692.000.9.2



NORWEST CENTRAL (SOUTH VIEW)  
Multi-Storey Glass and Concrete Commercial Building  
No. 8-12 Century Circuit



PARKING AND BRIDGE TO LAKESIDE RESTAURANTS (SOUTH VIEW)  
Concrete and Metal



NORWEST CENTRAL (WEST VIEW)  
Multi-Storey Glass and Concrete Commercial Building  
No. 8-12 Century Circuit

LEGEND

CODE	Description
RL	REDUCED LEVEL
DH	DOOR HEAD
DS	DOOR SILL
WH	WINDOW SILL
WS	WINDOW SILL

CLIENT

NORWEST CITY TRUST

PROJECT

DETAIL SURVEY

OF

NORWEST MARKETOWN

LOT 2 IN DP1213272 &  
LOT 5080 IN DP1008602  
(4 & 6 CENTURY CIRCUIT NORWEST)

NOTES

(i)

This plan has been prepared for the exclusive use of NORWEST CITY TRUST and their consultants for design purposes and is not to be used for any other purpose or by any other entity without the express permission of LandPartners Pty Ltd.

(ii)

The title boundaries as shown hereon were not marked at the time of survey. Field survey was undertaken to confirm there are no significant differences to the title dimensions.

(iii)

Services shown hereon have been located where visible by field survey. If not able to be so located, services have been plotted from the records of relevant authorities where available and have been noted or symbolised accordingly. Where such records do not exist or are inadequate a notation has been made hereon.

(iv)

Underground connections where shown between services have been joined based on relevant authority records and have been symbolised accordingly.

(v)

Prior to any demolition, excavation or construction on the site, the relevant authority should be contacted for possible location of further underground services and detailed locations of all services.

(vi)

This data should not be reproduced in any way without the permission of LandPartners Pty Ltd.

(vii)

Any reproduction of this data must contain these notes

1	DRAWN	DATE	COMMENT
---	-------	------	---------

SYM	DESCRIPTION	SYM	DESCRIPTION
●	AUSPOST BOX	■	GAS MAIN
▲	BENCHMARK	■	GAS METER
●	BIN	■	GAS VALVE
●	BOLLARD	○	SEWER LAMPHOLE
⊕	BOREHOLE	○	SEWER MANHOLE
⊕	BUS STOP SIGN	○	SEWER WENT PIPE
⊕	FLAG POLE	⊕	OPTICAL FIBRE MARKER
⊕	GATE	⊕	OPTICAL FIBRE PIT
⊕	MAIL BOX	⊕	TELECOM DIST PILLAR
⊕	SEAT	⊕	TELECOM POLE
⊕	UNKNOWN SERVICE	⊕	TELECOM SINGLE PIT
⊕	DRAINAGE GULLY PIT	⊕	TELECOM TWIN PIT
⊕	DRAINAGE MANHOLE	⊕	TRAFFIC JUNCTION BOX
⊕	ELEC FUSE BOX	⊕	TRAFFIC LIGHT
⊕	ELEC GARDEN LIGHT	⊕	TRAFFIC SIGN
⊕	ELEC GREEN PILLAR	⊕	TRAF SIGNAL CONTROLLER
⊕	ELEC LIGHT POLE	⊕	SHRUB
⊕	ELEC POLE & LIGHT	⊕	TREE
⊕	ELEC POLE&TRANSFORMER	⊕	WATER AIR VALVE
⊕	ELEC POWER POLE	⊕	WATER HYDRANT
⊕	ELEC SINGLE PIT	⊕	WATER METER
⊕	ELEC STAY POLE	⊕	WATER PUMP
⊕	ELEC TWIN PIT	⊕	WATER STOP VALVE
⊕	FUEL DIP	⊕	WATER TAP

Symbols shown are indicative only. The symbol size and orientation does not necessarily represent the real size or orientation of the feature.




DRAINAGE PIPE U/G	— SW — SW — SW — SW —
DRAIN	— D — D — D — D —
ELECT. CABLE A/G	— W — W — W — W —
ELEC. CABLE U/G	— E — E — E — E —
GAS PIPE	— GAS — GAS — GAS — GAS —
FENCE LINE	— F — F — F — F —
SEWERAGE PIPE	— S — S — S — S —
TELSTRA CABLE	— T — T — T — T —
WATER PIPE	— W — W — W — W —



**LANDPARTNERS**  
surveyors and planners

**Sydney Office**  
Level 2  
23-29 South Street  
Rydalmere NSW 2116  
PO Box 1144  
Dundas NSW 2117

p: (02) 9685 2000  
e: info@landpartners.com.au  
w: www.landpartners.com.au

					
LEVEL DATUM AHD (SCIMS)		LOCAL AUTHORITY THE HILLS SHIRE			
LEVEL ORIGIN SSM64428		SCALE 1:150 (A1)			
MERIDIAN 56		CONTOUR INTERVAL -			
CO-ORD SYSTEM GDA2020		DRAWN JL		DATE 09/01/2023	
SURVEYOR DW		DATE OF SURVEY 17/11/2022		CHECKED RL	
FIELD FILE -		APPROVED RL		DATE 09/01/2023	
UDN		SHEET 10 OF 12			
SY075692.000.9.2					



ESPLANADE- EAST VIEW  
Multi-Storey Glass and Concrete Mixed Use Commercial & Residential Building  
No. 11 Solent Circuit,Norwest

LEGEND

CODE	Description
RL	REDUCED LEVEL
DH	DOOR HEAD
DS	DOOR SILL
WH	WINDOW SILL
WS	WINDOW SILL

CLIENT

NORWEST CITY TRUST

PROJECT

DETAIL SURVEY

OF

NORWEST MARKETOWN

LOT 2 IN DP1213272 &

LOT 5080 IN DP1008602

(4 & 6 CENTURY CIRCUIT NORWEST)

NOTES

(i)

This plan has been prepared for the exclusive use of NORWEST CITY TRUST and their consultants for design purposes and is not to be used for any other purpose or by any other entity without the express permission of LandPartners Pty Ltd.

(ii)

The title boundaries as shown hereon were not marked at the time of survey. Field survey was undertaken to confirm there are no significant differences to the title dimensions.

(iii)

Services shown hereon have been located where visible by field survey. If not able to be so located, services have been plotted from the records of relevant authorities where available and have been noted or symbolised accordingly. Where such records do not exist or are inadequate a notation has been made hereon.

(iv)

Underground connections where shown between services have been joined based on relevant authority records and have been symbolised accordingly.

(v)

Prior to any demolition, excavation or construction on the site, the relevant authority should be contacted for possible location of further underground services and detailed locations of all services.

(vi)

This data should not be reproduced in any way without the permission of LandPartners Pty Ltd.

(vii)

Any reproduction of this data must contain these notes

1

DRAWN

DATE

COMMENT

SYM DESCRIPTION	SYM DESCRIPTION
● AUSPOST BOX	■ GAS MAIN
▲ BENCHMARK	■ GAS METER
● BIN	■ GAS VALVE
● BOLLARD	○ SEWER LAMPHOLE
⊕ BOREHOLE	○ SEWER MANHOLE
⊕ BUS STOP SIGN	○ SEWER VENT PIPE
⊕ FLAG POLE	⊕ OPTICAL FIBRE MARKER
⊕ GATE	⊕ OPTICAL FIBRE PIT
⊕ MAIL BOX	⊕ TELECOM DIST PILLAR
⊕ SEAT	⊕ TELECOM POLE
⊕ UNKNOWN SERVICE	⊕ TELECOM SINGLE PIT
⊕ DRAINAGE GULLY PIT	⊕ TELECOM TWIN PIT
⊕ DRAINAGE MANHOLE	⊕ TRAFFIC JUNCTION BOX
⊕ ELEC FUSE BOX	⊕ TRAFFIC LIGHT
⊕ ELEC GARDEN LIGHT	⊕ TRAFFIC SIGN
⊕ ELEC GREEN PILLAR	⊕ TRAF SIGNAL CONTROLLER
⊕ ELEC LIGHT POLE	⊕ SHRUB
⊕ ELEC POLE & LIGHT	⊕ TREE
⊕ ELEC POLE&TRANSFORMER	⊕ WATER AIR VALVE
⊕ ELEC POWER POLE	⊕ WATER HYDRANT
⊕ ELEC SINGLE PIT	⊕ WATER METER
⊕ ELEC STAY POLE	⊕ WATER PUMP
⊕ ELEC TWIN PIT	⊕ WATER STOP VALVE
⊕ FUEL DIP	⊕ WATER TAP

Symbols shown are indicative only. The symbol size and orientation does not necessarily represent the real size or orientation of the feature.

DRAINAGE PIPE U/G	— SW — SW — SW — SW —
DRAIN	— D — D — D — D —
ELECT. CABLE A/G	— W — W — W — W —
ELEC. CABLE U/G	— E — E — E — E —
GAS PIPE	— GAS — GAS — GAS — GAS —
FENCE LINE	— F — F — F — F —
SEWERAGE PIPE	— S — S — S — S —
TELSTRA CABLE	— T — T — T — T —
WATER PIPE	— W — W — W — W —

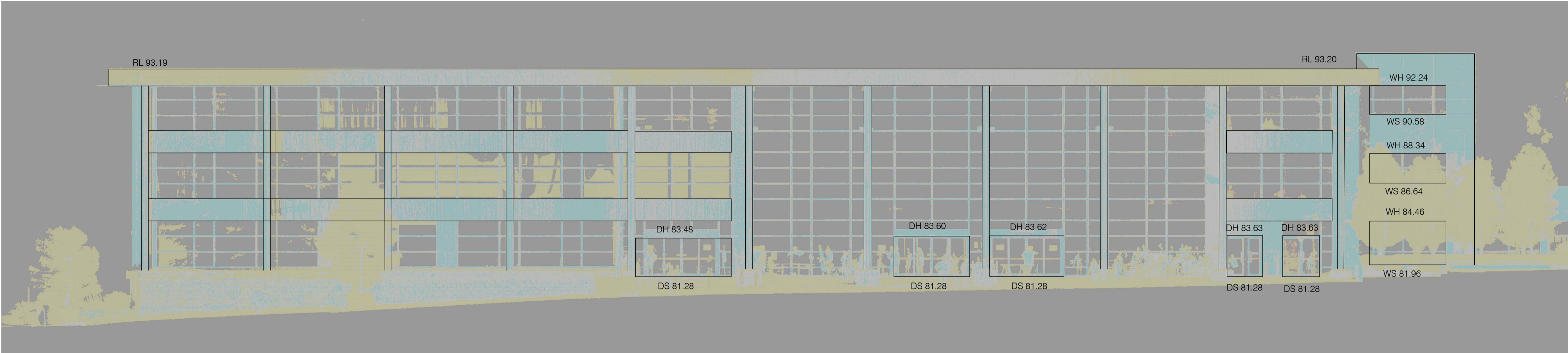


**LANDPARTNERS**  
surveyors and planners

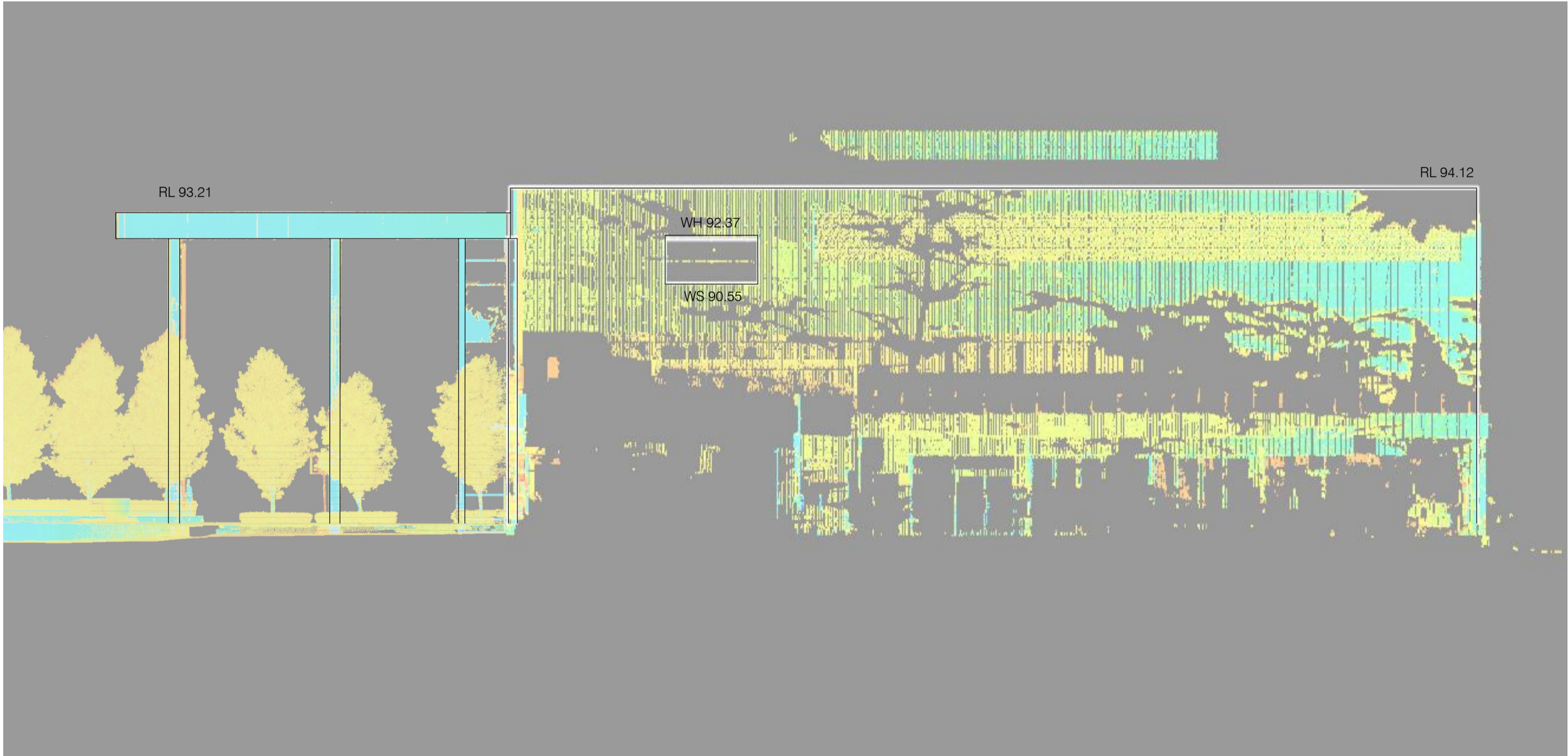
**Sydney Office**  
Level 2  
23-29 South Street  
Rydalmere NSW 2116  
PO Box 1144  
Dundas NSW 2117

p: (02) 9685 2000  
e: info@landpartners.com.au  
w: www.landpartners.com.au

bsi ISO 9001 Quality Management System CERTIFIED		bsi ISO 45001 Occupational Health and Safety Management System CERTIFIED		AS/NZS 4501 Occupational Health and Safety Management System CERTIFIED	
LEVEL DATUM AHD (SCIMS)		LOCAL AUTHORITY THE HILLS SHIRE			
LEVEL ORIGIN SSM64428		SCALE 1:150 (A1)			
MERIDIAN 56		CONTOUR INTERVAL -			
CO-ORD SYSTEM GDA2020		DRAWN JL		DATE 09/01/2023	
SURVEYOR DW		DATE OF SURVEY 17/11/2022		CHECKED RL	
FIELD FILE -		APPROVED RL		DATE 09/01/2023	
UDN		SHEET 11 OF 12			
SY075692.000.9.2					



EPI CENTRE- SOUTH VIEW  
Glass and Concrete  
No. 13 Century Circuit,Norwest



EPI CENTRE- EAST VIEW  
Glass and Concrete  
No. 13 Century Circuit,Norwest

LEGEND	
CODE	Description
RL	REDUCED LEVEL
DH	DOOR HEAD
DS	DOOR SILL
WH	WINDOW SILL
WS	WINDOW SILL

CLIENT

NORWEST CITY TRUST

PROJECT

DETAIL SURVEY  
OF  
NORWEST MARKETOWN  
LOT 2 IN DP1213272 &  
LOT 5080 IN DP1008602  
(4 & 6 CENTURY CIRCUIT NORWEST)

NOTES

(i) This plan has been prepared for the exclusive use of NORWEST CITY TRUST and their consultants for design purposes and is not to be used for any other purpose or by any other entity without the express permission of LandPartners Pty Ltd.

(ii) The title boundaries as shown hereon were not marked at the time of survey. Field survey was undertaken to confirm there are no significant differences to the title dimensions.

(iii) Services shown hereon have been located where visible by field survey. If not able to be so located, services have been plotted from the records of relevant authorities where available and have been noted or symbolised accordingly. Where such records do not exist or are inadequate a notation has been made hereon.

(iv) Underground connections where shown between services have been joined based on relevant authority records and have been symbolised accordingly.

(v) Prior to any demolition, excavation or construction on the site, the relevant authority should be contacted for possible location of further underground services and detailed locations of all services.

(vi) This data should not be reproduced in any way without the permission of LandPartners Pty Ltd.

(vii) Any reproduction of this data must contain these notes

1	DRAWN	DATE	COMMENT

SYM DESCRIPTION

ALUPST BOX

BENCH-MARK

BIN

BOLLARD

BOREHOLE

BUS STOP SIGN

FLAG POLE

GATE

MAIL BOX

SEAT

UNKNOWN SERVICE

DRAINAGE GULLY PIT

DRAINAGE MANHOLE

ELEC FUSE BOX

ELEC GARDEN LIGHT

ELEC GREEN PILLAR

ELEC LIGHT POLE

ELEC POLE & LIGHT

ELEC POLE&TRANSFORMER

ELEC POWER POLE

ELEC SINGLE PIT

ELEC STAY POLE

ELEC TWIN PIT

FUEL DIP

SYM DESCRIPTION

GAS MAIN

GAS METER

GAS VALVE

SEWER LAMPHOLE

SEWER MANHOLE

SEWER VENT PIPE

OPTICAL FIBRE MARKER

OPTICAL FIBRE PIT

TELECOM DIST PILLAR

TELECOM POLE

TELECOM SINGLE PIT

TELECOM TWIN PIT

TRAFFIC JUNCTION BOX

TRAFFIC LIGHT

TRAFFIC SIGN

TRAF SIGNAL CONTROLLER

SHRUB

TREE

WATER AIR VALVE

WATER HYDRANT

WATER METER

WATER PUMP

WATER STOP VALVE

WATER TAP

Symbols shown are indicative only. The symbol size and orientation does not necessarily represent the real size or orientation of the feature.

DRAINAGE PIPE U/G

DRAINAGE PIPE U/G

DRAIN

DRAIN

ELECT. CABLE A/G

ELECT. CABLE A/G

ELEC. CABLE U/G

ELEC. CABLE U/G

GAS PIPE

GAS PIPE

FENCE LINE

FENCE LINE

SEWERAGE PIPE

SEWERAGE PIPE

TELSTRA CABLE

TELSTRA CABLE

WATER PIPE

WATER PIPE

Sydney Office

Level 2

23-29 South Street

Rydalmere NSW 2116

PO Box 1144

Dundas NSW 2117

p: (02) 9685 2000

e: info@landpartners.com.au

w: www.landpartners.com.au

LEVEL DATUM

AHD (SCIMS)

LOCAL AUTHORITY

THE HILLS SHIRE

LEVEL ORIGIN

SSM64428

SCALE

1:150 (A1)

MERIDIAN

56

CONTOUR INTERVAL

-

CO-ORD SYSTEM

GDA2020

DRAWN

JL

DATE

09/01/2023

SURVEYOR

DW

DATE OF SURVEY

17/11/2022

CHECKED

RL

DATE

09/01/2023

FIELD FILE

-

APPROVED

RL

DATE

09/01/2023

UDN

SY075692.000.9.2

SHEET 12 OF 12